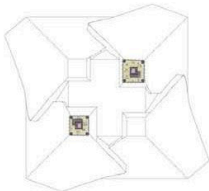
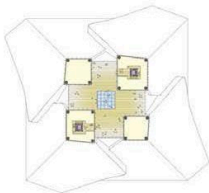


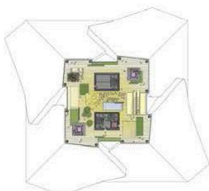
楼冠备选方案1 CROWN ALTERNATE 1



尖塔观景层平面图
SPIRE OBSERVATION PLAN

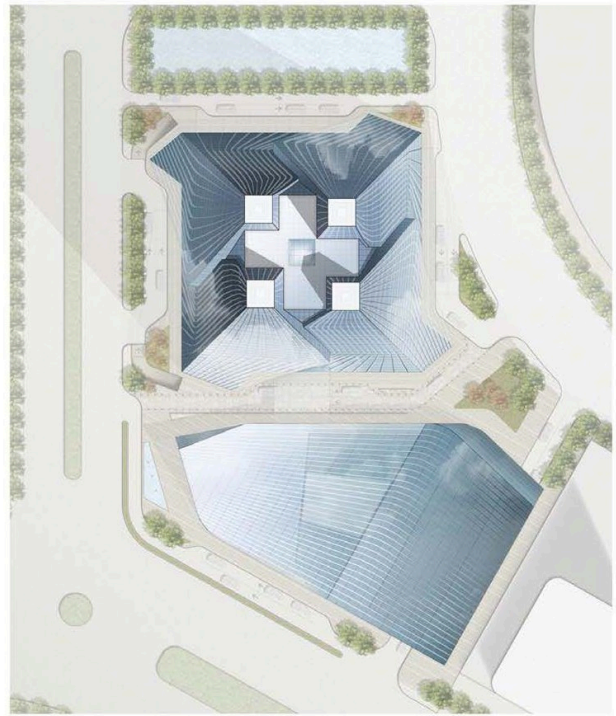


615米高户外观景平面图
615M HIGH OUTDOOR
OBSERVATION PLAN



观景台129层平面图
OBSERVATION LEVEL 129 PLAN





SIP Zhongnan Center

Suzhou, China

This 700-meter mixed-use tower was designed to be China's tallest and the world's second-tallest structure. Its planned location near the natural beauty of Suzhou's Jinji Lake and amidst a maturing business and economic environment ensures an immediate sense of place within the city's busiest financial center.

The project's design concept identifies "aspiration" and the ambitions of Suzhou, along with the organic character of its gardens and waters, as inspiration for the unique building image. The tower edge tapers from bottom to top to achieve an elegant profile. This form also reflects the vertical transition of its program spaces: from office use on the lower levels to hotel, luxury apartments and observation destinations at the top. The main design feature of the exterior wall is a sinuous vertical line that acts as both reveal and overlapping edge as it travels up the building to define a unique, iconic top. The overall effect suggests a flowing garment.

At the base of the building, the reveal migrates to the corner and "pulls" the exterior wall out like an opening in the garment to define areas for entry. At the top, the reveal widens to become an airy, light-filled volume providing dramatic views to the city as well as up through a glazed roof to the building's crown. Spires spring upward from each façade's reveal at the observation level in a kinetic thrust, symbolizing the aspiration of Suzhou to be perpetually rising. The crown spires, dramatically illuminated from within at night, enhance the image of a unique building intended to be recognized not only from all directions in Suzhou but also throughout China.

Project Data

SIZE

700-meter tower
3,852,000 sf total
1,741,100 sf office
645,100 sf apartment
41,700 sf observation
41,300 sf club/fine dining

FEATURES

56-key, seven-star hotel
240-key, five-star hotel

CLIENT

Suzhou Industrial Park Hengyu Real Estate Co. Ltd.